








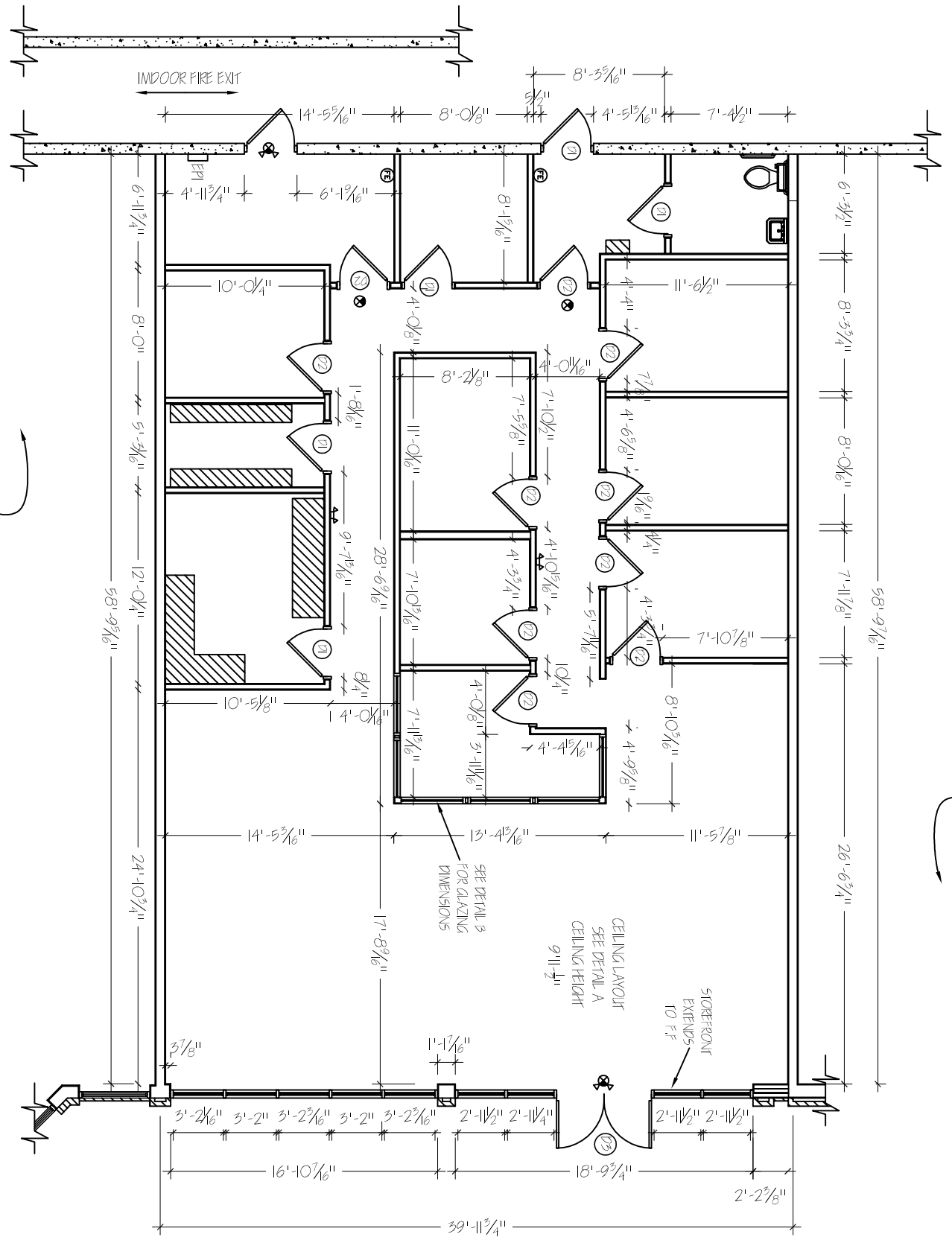


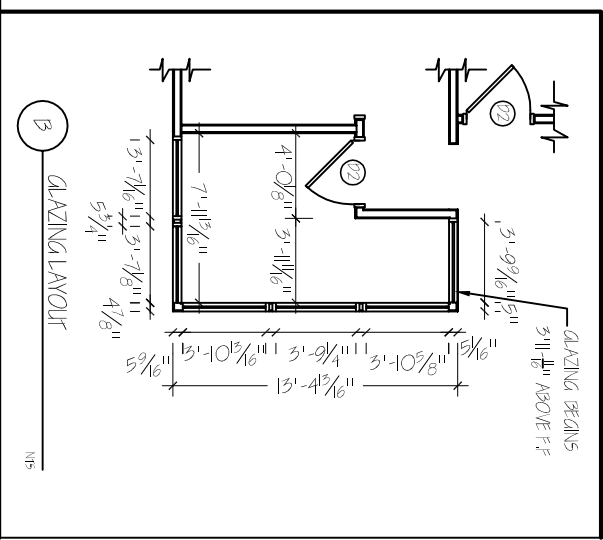
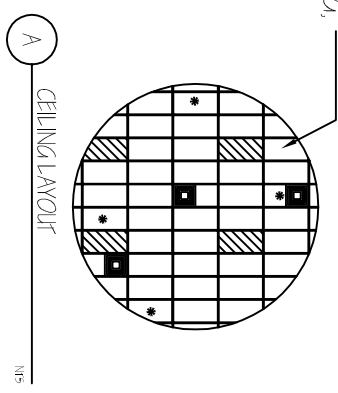
GENERAL NOTES: 1) ALL ROOMS 3'-0" UNLESS OTHERWISE NOTED. 2) DIMENSIONS ARE FOR INTERIOR REFERENCE ONLY AND DO NOT REFLECT TOP, SLOPE, SQUARE FOOTAGE, OR CEILING HEIGHTS UNLESS INDICATED. 3) CEILING HEIGHTS VARY THROUGHOUT. ELECTRICAL PANEL INTEGRATION: EPH, CPH, DDC, CDS, 51 SERIES AND 1 INCH O.D.	
 CONCRETE  BRICK HATCH PATTERNS:	 3'0" DOOR  2'11 1/2" DOOR  DOUBLE 3'0" DOOR
 EMERGENCY LIGHTS  FIRE ALARM CALL OR WALL MOUNTED  FIRE ALARM BELL  SPRINKLER	DOOR SCHEDULE ① 3'0" DOOR ② 2'11 1/2" DOOR ③ DOUBLE 3'0" DOOR



ADJACENT SUITE 320

ADJACENT SUITE 300

2' X 4' DROP TILE
W/ INLAY
FLUORESCENT LIGHTING,
SPRINKLER SYSTEM
& VENTS



DATE 02/28/2010 SCALE AS SHOWN APP. NO. MIMMS/COX SHEET A-1 1 OF 1 SHEETS	DESIGN MIMMS/COX CHECKED DATE 02/28/2010 SCALE AS SHOWN APP. NO. MIMMS/COX SHEET A-1 1 OF 1 SHEETS
--	--

SPACE PLAN

KINGS MARKET SHOPPING CENTER
SUITE 315
1425 HOLCOMB BRIDGE ROAD
ROSWELL, GA 30067

MALON D MIMMS CO
85-A MILL ST.
ROSWELL, GA 30075
770-518-1100

