




GENERAL NOTES:

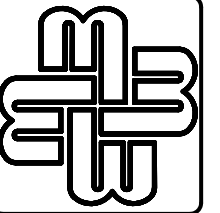
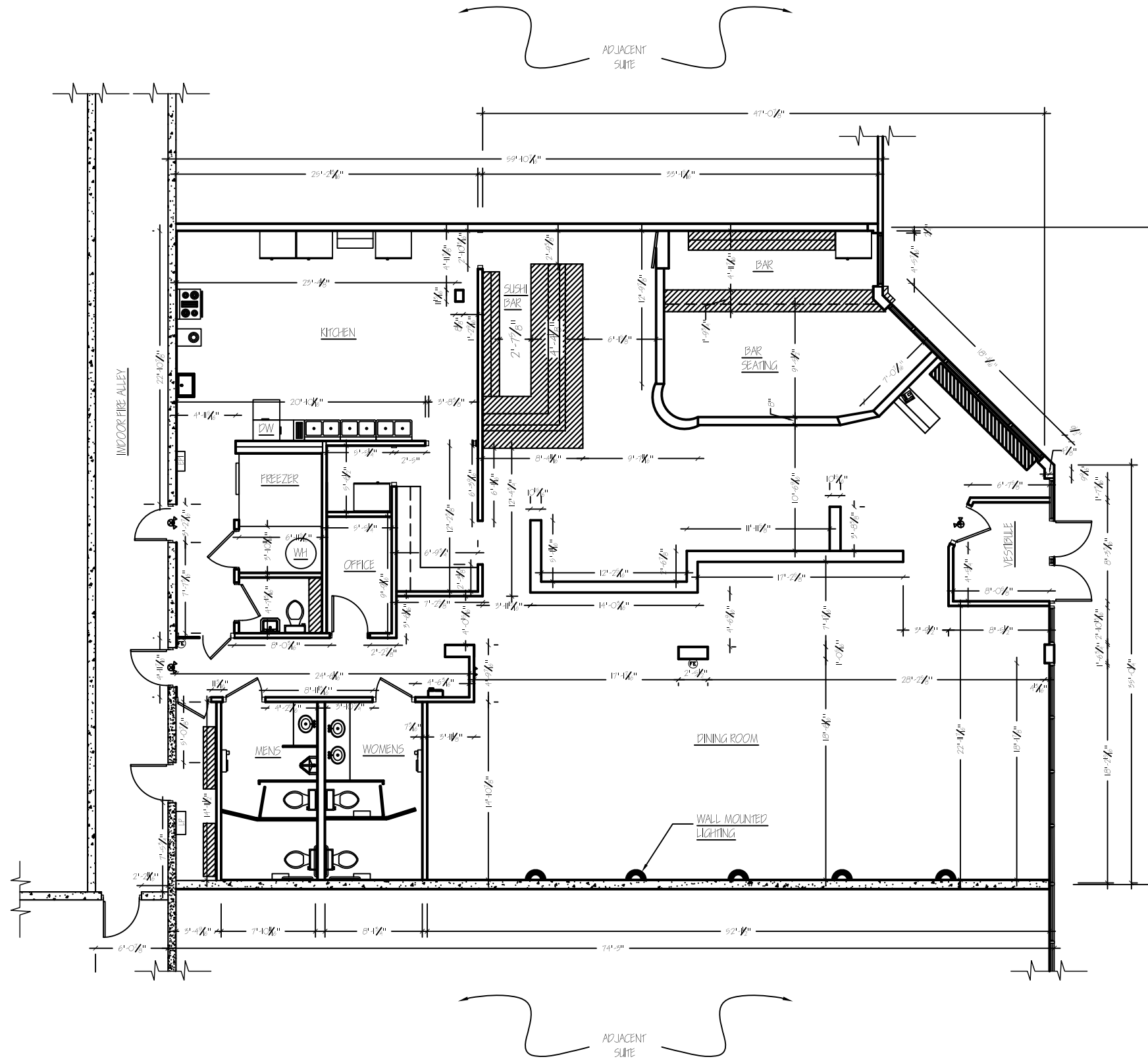
- 1) ALL DOORS 3'-0" UNLESS OTHERWISE NOTED.
- 2) DIMENSIONS ARE FOR INTERIOR REFERENCE ONLY, AND DO NOT REFLECT TOTAL SUITE SQUARE FOOTAGE.
- 3) CEILING HEIGHTS NOTED ON SEPERATE DRAWING.

ELECTRICAL PANEL INFORMATION:
NO ELECTRICAL PANEL INFORMATION

- ☒ COMBINATION EXIT SIGN AND EMERGENCY BATTERY LIGHT, NUMBER OF HEADS INDICATED, WALL MOUNTED.
- ☒ EMERGENCY LIGHTS
- EXIT LIGHT
- ☒ FIRE EXTINGUISHER
- * SPRINKLER
- ☒ SCONCE LIGHTING

HATCH PATTERNS:

-  BRICK
-  EPS
-  CONCRETE



MALON D MIMMS CO
85-A MILL ST.
ROSWELL, GA 30075
770-518-1100

KINGS MARKET SHOPPING CENTER
SUITE 320 FLOOR PLAN
1425 HOLCOMB BRIDGE ROAD
ROSWELL, GA 30067

SPACE PLAN	REVISIONS

NGADRISSON
1/16/2010
SCALE AS SHOWN
JOB NO. MIMMS0000
A-1
1 of 1